



INTERNATIONAL ETHELLES CLASS 2019 Bedrock Trophy

Saturday 24 and Sunday 25 August 2019

SAILING INSTRUCTIONS

The organising authority (OA) is the Royal London Yacht Club (RLYC)
in conjunction with the Cowes Etchells Fleet.

The Regatta Venue and the Regatta Office are at Cowes Yacht Haven (CYH), Cowes.

1. RULES

- 1.1 The regatta will be governed by
 - a) the 'rules' as defined in the current Racing Rules of Sailing (RRS)
 - b) the International Etchells Class rules
 - c) the byelaws for the Port of Southampton, Portsmouth Harbour and Cowes Harbour
 - d) Local Notice to Mariners No. 33 (T) of 2019 (Cowes Offshore Powerboat Races).
- 1.2 This regatta constitutes part of the International Etchells (Cowes Fleet) Champion of Champion series.
- 1.3 Sails may be borrowed in accordance with Etchells Class Rule C10.3.
- 1.4 If there is a conflict between rules or regulations, including the notice of race, the sailing instructions shall prevail. This changes RRS 63.7.

2. NOTICES TO COMPETITORS

- 2.1 Notices to competitors will be posted on the official notice board located on the side of the Etchells container at the Cowes Yacht Haven (CYH).
- 2.2 VHF channel 77 will be used for radio communication unless otherwise advised at the briefing. See SIs 8, 11.3, 18.5, 25.1 and 25.2.

3. CHANGES TO SAILING INSTRUCTIONS

- 3.1 Any change to the sailing instructions will be posted before 0900 on the day it will take effect, except that any change to the schedule of races will be posted by 2000 on the day before it will take effect.

4. SIGNALS MADE ASHORE

- 4.1 Signals made ashore will be displayed at the Cowes Yacht Haven and may be repeated at the Royal London Yacht Club flagstaff.
- 4.2 When flag AP is displayed ashore, '1 minute' is replaced with 'not less than 45 minutes' in race signal AP. This changes RSS Race Signals.

5. REGISTRATION

- 5.1 Crew weigh-in and sail nomination are not required for this regatta. However, during the regatta crew weights may be checked and any boat or sails may be subject to measurement or

examination at any time.

6. SCHEDULE OF RACES

6.1 Racing and associated events are scheduled as follows:

Date	HW *	Time	Event	Location
Saturday 24 August	0541 3.9m 1817 4.0m	0930 1155 1930	Briefing First warning signal Hot Buffet Supper (£18)	CYH Central Solent RLYC
Sunday 25 August	0650 3.8m 1927 3.9m	1055 After racing	First warning signal Prize-giving	Central Solent CYH

* all HW times refer to HW Portsmouth. All times in this programme are BST.

6.2 Up to six races are scheduled. It is the intention of the race committee to run three races per day.

6.3 When more than one race will be held on the same day, the warning signal for each succeeding race will be made as soon as practicable. To alert boats that another race will begin soon, AP will be displayed at the finish of the previous race.

6.4 On the second scheduled day of racing, no warning signal will be made after 1500 unless a postponement or general recall has been signalled during or as part of that starting sequence.

7. CLASS FLAG

7.1 The class flag will be the Etchells class insignia on a white background or IC Flag E.

8. RACING AREA

8.1 Racing will take place in the Central Solent including the Bramble Bank.

8.2 The race committee will broadcast from around 1000 on Saturday 24 August and 0930 on Sunday 25 August the two-digit code of a fixed mark near to the intended starting area (See Appendix 2).

9. THE COURSE

9.1 The diagrams in Appendix 1 show the course configurations, including the order in which marks are to be passed, and the side on which each mark is to be left. The courses to be sailed are shown below each diagram. The length of the windward legs will be up to approximately 2 nm but may be shorter taking into account the conditions prevailing on the day.

9.2 The course to be sailed for each race will be signalled from the committee vessel, either visually by displaying the single code letter and number shown in Appendix 1, entitled 'Laid Courses', or alternatively, or in addition, by broadcast on the designated VHF channel.

9.3 The race committee vessel may display the approximate compass bearing and distance from the starting line to mark 1.

10. MARKS

10.1 Marks 1, 2, 3P and 3S will be red inflatable buoys, or as described at the briefing.

10.2 New marks, as provided in SI 12.1, will be black inflatable, either rectangular or triangular.

10.3 The race committee may lay an inner distance mark on or just in the pre-start area of the starting line. While racing, boats shall not pass between this mark and the committee vessel.

11. THE START

11.1 The starting line is between the staff displaying an orange flag on the committee vessel at the starboard end of the line and the course side of an orange inflatable mark at the port end of the line.

11.2 A boat starting later than 10 minutes after the starting signal will be scored DNS. This changes RRS 63.1, A4.1 and A.5.

11.3 The race committee will attempt to broadcast OCS, UFD and BFD boats on VHF. Failure of

equipment, failure to hear or any delay to broadcast or the order of the bow or sail numbers broadcast shall not be grounds for redress. This changes RRS 62.1(a).

12. CHANGE OF THE NEXT LEG OF THE COURSE

- 12.1 To change the next leg of the course, the race committee will lay a new mark (or move the finishing line) and remove the original mark as soon as practicable. When in a subsequent change a new mark is replaced, it will be replaced by an original mark. The change will be signaled before the leading boat has begun the leg, although the mark (or finishing line) may not yet be in the new position.
- 12.2 The position of any laid inflatable mark(s) may be adjusted by up to plus or minus 10 degrees and up to approximately 500 metres to windward or leeward, relative to the previous position, without signaling code flag C nor '+' nor '-'. This changes RRS 33.

13. THE FINISH

- 13.1 The finishing line will be between a staff displaying an orange flag on the committee vessel and the course side of a laid inflatable mark at the other end of the line.
- 13.2 The race committee may shorten the line to a more appropriate length for the finish.

14. PENALTY SYSTEM

- 14.1 The penalty for breaking a rule of Part 2 and RRS 31 shall be a One Turn Penalty (one tack and one gybe in the same direction) except that for infringements of a rule of Part 2 occurring within the zone (excluding the starting mark) as defined in the current RRS the penalty shall be a Two Turns Penalty (two tacks and two gybes in the same direction). This changes RRS 44.1 and 44.2.

15. TIME LIMITS

- 15.1 The time limit will be 90 minutes from the starting signal.
- 15.2 Boats failing to finish within 20 minutes after the first boat sails the course and finishes will be scored DNF. This changes RRS 35, A4.2 and A5.

16. PROTESTS AND REQUESTS FOR REDRESS

- 16.1 Protest forms are available at the regatta office at Cowes Yacht Haven. Protests shall be delivered there within 90 minutes of the last boat to finish the last race of the day. This time will be posted on the official notice board. This changes RRS 61.3 and 62.2.
- 16.2 Notices will be posted within 30 minutes of the protest time limit to inform competitors of hearings in which they are parties or named as witnesses. Hearings will be held at the Cowes Yacht Haven or the Royal London Yacht Club as soon as possible after the protest time limit expires.
- 16.3 Notices of protests by the race committee or the protest committee will be posted within the protest time limit on the official notice board to inform boats under RRS 61.1(b).
- 16.4 For infringements of the rules other than Part 2 and rule 31, the protest committee may award a lesser penalty than DSQ.
- 16.5 For the purpose of RRS 64.3(b) the 'authority responsible' is the class international governing committee.
- 16.6 Breaches of SIs 14.2, 18, 19, 23, 24 and 25 and RRS 55 will not be grounds for protest by a boat. This changes RRS 60.1(a). Penalties for these breaches may be less than disqualification if the protest committee so decides.
- 16.7 On the last day of the regatta:
 - a) a request for reopening a hearing shall be delivered within the protest time limit if the party requesting reopening was informed of the decision on the previous day;
 - b) a request for reopening a hearing held on the last day shall be delivered no later than 30

- minutes after the party requesting reopening was informed of the decision on that day;
- c) the time limit to request redress based upon an action or omission of the race committee or protest committee shall be 30 minutes after the final results are posted. This changes RRS 62 and 66.

17. SCORING

- 17.1 One race is required to be completed to constitute a series.
- 17.2 a) When three races have been completed a boat's series score will be the total of her race scores.
- b) When four or more races have been completed, a boat's series score will be the total of her race scores excluding her worst score.

18. SAFETY REGULATIONS

- 18.1 When leaving and entering Cowes Harbour boats shall not sail through the moorings unless safety dictates.
- 18.2 All boats shall observe the ABP byelaw the 'Moving Prohibited Zone' and ABP Notice to Mariners No. 14 of 2019.
- 18.3 Boats shall keep a good look out for commercial traffic and give way to all such vessels.
- 18.4 All boats shall sail on starboard tack close to the stern of the committee boat and hail their sail number prior to the start of the first race each day.
- 18.5 A boat that retires from a race shall notify the race committee as soon as possible by VHF or by hailing an official regatta support boat/rib.
- 18.6 All boats while racing shall pass to the north of Cowes breakwater.

19. REPLACEMENT OF CREW OR EQUIPMENT

- 19.1 Substitution of crew will not be allowed without prior written approval of the protest committee, and such requests shall be submitted to the race committee for verification of eligibility and crew weight of the substitute crew.
- 19.2 After 1700 on the day before the first scheduled race until completion of racing, no boat, sail or any item of measured equipment shall leave the venue without being posted on the official equipment sign-out sheet on the official notice board. It is the sole responsibility of each skipper to ensure proper recording.
- 19.3 After 1700 on the day before the first scheduled race until completion of racing, no sail shall be recut or altered. Repairs to sails pursuant to all applicable rules are permissible only upon written approval of the protest committee. All such sails may be subject to re-measurement on completion of repairs.

20. EQUIPMENT AND MEASUREMENT CHECKS

- 20.1 A boat or equipment may be inspected at any time for compliance with the class rules and sailing instructions which may include RRS 43 and class rules C.2.2 and C.3.2.
- 20.2 On the water, a boat can be instructed by the race committee or the protest committee to proceed immediately to a designated area for inspection.

21. OFFICIAL BOATS

- 22.1 Race committee boats will display the RLYC burgee and may additionally display 'RC' flags.

22. COACH AND SUPPORT BOATS

- 22.1 Coach and support boats must be registered with the organising authority prior to acting as a coach or support boat.

- 22.2 All registered coach and support boats will carry on board and operate while on the water a VHF radio capable of transmitting and receiving on the designated VHF channel (77 or as advised at the briefing) and agree to assist the race committee if directed to do so.
- 22.3 Competitors shall have no communication with, and boats shall not be tied to, coach or support boats from the time of leaving the dock on each race day until racing has been concluded for the day. Between races, coach and support boats shall not approach, communicate with or transfer provisions or equipment to or from their supported boats unless in a medical or emergency threatening the health of the crew or the flotation of the boat and only with the express permission of the protest committee or the race committee.
- 22.4 Registered coach and support boats and their personnel shall stay at least 100 metres below the starting line and its extensions from the time of the preparatory signal until five minutes after the start of any race. After this time, coach and support boats may then proceed parallel to the course on the starboard side of the course facing the wind at a distance of at least 100 metres outside areas where boats are racing. Coach and support boats shall not go above the weather marks or the course A finishing line or below the leeward marks or any downwind finishing line at any other time while boats are racing.
- 22.5 Coach and support boats shall, when requested by the race committee, tow or assist boats not associated with them. Coach and support boats are to monitor the designated VHF channel and shall follow all instructions from the race committee.
- 22.6 Any breach of SIs 22.1, 22.2, 22.3, 22.4 or 22.5 by a coach or support boat may result in a penalty being applied to any or all boats serviced by that coach or support boat. The penalty may be disqualification or some other penalty as determined by the protest committee.

23. HAUL-OUT RESTRICTIONS

- 23.1 All boats shall be afloat before 1700 on the day before the first scheduled race and shall not be hauled out during the championship except with and according to the terms of prior written permission of the protest committee. The penalty may be DSQ for any subsequent races.

24. PLASTIC POOLS AND BREATHING APPARATUS

- 24.1 Plastic pools or their equivalent shall not be used around competing yachts after 1700 on the day before the first scheduled race until the end of the championship.
- 24.2 The use of breathing apparatus, including snorkels, is not allowed from 0900 on Saturday 24 August 2019 until after the last race of the regatta. Any swimmer must be accompanied by a watcher close by.

25. RADIO COMMUNICATION

- 25.1 This supplements but does not change rules 2 and 41 for the IECA. All boats must carry a marine band VHF receiver capable of receiving normal international channels. Boats shall use the radio to report retirement from racing and may use the radio to request assistance in an emergency. No other transmissions are permitted by competing yachts during each racing day from the first warning signal until the end of the last race of the day.
- 25.2 The race committee may use VHF channel 77 or another designated channel to provide competitors with race information.
- 25.3 The use of mobile/cell phones or any device capable of sending and/or receiving external electronic communication and/or connecting to the internet is prohibited after the first warning signal (or any other time considered appropriate by the organising authority) on each race day until the boat has completed its day's racing, except as provided in SI 25.1 or in an emergency threatening the safety of any member of the crew or the flotation of the boat or otherwise with the express permission of the protest committee or the race committee.

26. WAIVER OF LIABILITY

- 26.1 Competitors participate in the regatta entirely at their own risk. See RRS 4 Decision to Race and NoR 17. The organising authority will not accept any liability for material damage, personal injury or any fatality sustained in conjunction with or prior to, during or after the championship.
- 26.2 All boats competing are required to carry valid third party insurance with a minimum cover of GBP 3 million per incident or the equivalent.

27. PRIZEGIVING

- 27.1 Prizegiving will take place immediately after boats come ashore on Sunday 25 August 2019 at Cowes Yacht Haven.

28. RISK STATEMENT

- 28.1 Rule 4 of the Racing Rules of Sailing states: 'The responsibility for a boat's decision to participate in a race or to continue racing is hers alone.' Sailing is by its nature an unpredictable sport and therefore involves an element of risk. By taking part in the event, each competitor agrees and acknowledges that:
- a) They are aware of the inherent element of risk involved in the sport and accept responsibility for the exposure of themselves, their crew and their boat to such inherent risk whilst taking part;
 - b) They are responsible for the safety of themselves, their crew, their boat and their other property whether afloat or ashore;
 - c) They accept responsibility for any injury damage or loss to the extent caused by their own actions or omissions;
 - d) Their boat is in good order, equipped to sail in the event and they are fit to participate;
 - e) The provision of a race management team, patrol boats, umpires and other officials and volunteers by the organiser does not relieve them of their own responsibilities;
 - f) The provision of patrol boat cover is limited to such assistance, particularly in extreme weather conditions, as can be practically provided in the circumstances.

Appendix 1 – Courses

Laid Mark Two Digit Identifiers			
9A	Windward Mark	9B	Windward Spreader or Offset Mark
9C	Leeward Mark or Gate (above start line)	9D	Leeward Spreader or Offset Mark
9E	Leeward Mark or Gate (below start line)	9H	Outer Distance Mark
9J	Finish Mark		

Appendix 1 continued – Courses

Laid Courses


The course to be sailed is shown below each course diagram.

Leave all marks to port unless indicated (S) to starboard in courses with gates.

is Start / Finish Line. + is Finish Line.

Marks shown in brackets () will not be laid unless the designated symbol is displayed as follows:

When displayed  means a Spreader or Offset Mark (1A) is laid.

When displayed  means the Leeward Mark is a gate.

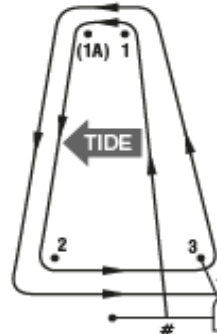
When displayed  means finish the other side or ahead of the committee boat to the start line.

Course A



- A1** Start-1-(1A)-2(2S)-1
- A2** Start-1-(1A)-2(2S)-1-(1A)-2(2S)-1 (shown above)

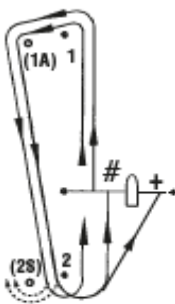
Course N



- N1** Start-1-(1A)-2-+
- N2** Start-1-(1A)-2-3-1-(1A)-2-+ (shown above)
- N3** Start-1-(1A)-2-3-1-(1A)-2-3-1-(1A)-2-+

Diagrams are not sailing instructions

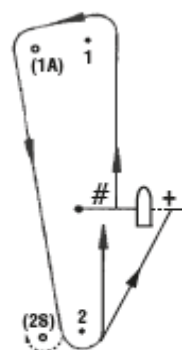
Course E



- E1** Start-1-(1A)-2(2S)-# or +
- E2** Start-1-(1A)-2(2S)-1-(1A)-2(2S)-# or + (shown above)
- E3** Start-1-(1A)-2(2S)-1-(1A)-2(2S)-1-(1A)-2(2S)-# or +

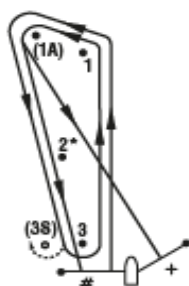
Diagrams are not sailing instructions

Course G



- G1** Start-1-(1A)-2(2S)-# or + (shown above)
- G2** Start-1-(1A)-2(2S)-#-1-(1A)-2(2S)-# or +
- G3** Start-1-(1A)-2(2S)-#-1-(1A)-2(2S)-#-1-(1A)-2(2S)-# or +

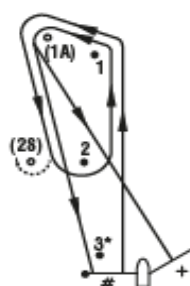
Course U



- U1** Start-1-1A-+ or #
 - U2** Start-1-(1A)-3(3S)-1-(1A)-+ or # (shown above)
 - U3** Start-1-(1A)-3(3S)-1-(1A)-3(3S)-1-(1A)-+ or #
- *Mark 2, if laid, is not a mark of this course*

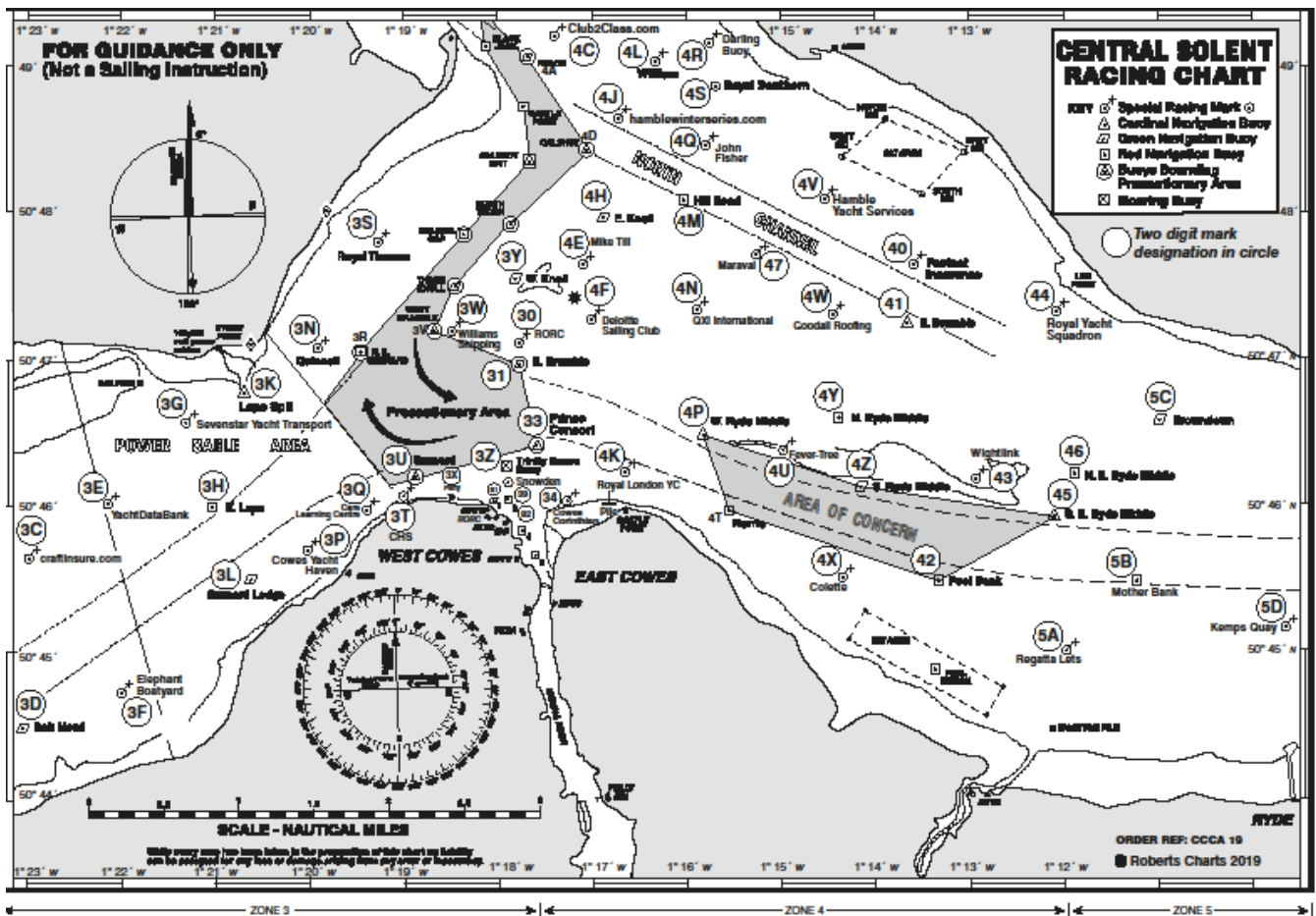
Diagrams are not sailing instructions

Course V



- V1** Start-1-(1A)-+ or #
 - V2** Start-1-(1A)-2(2S)-1-(1A)-+ or # (shown above)
 - V3** Start-1-(1A)-2(2S)-1-(1A)-2(2S)-1-(1A)-+ or #
- *Mark 3, if laid, is not a mark of this course*

Appendix 2 – two-digit identifiers



Central Solent Course Mark Two Digit Identifiers 2019

(3A) West Lepe	(30) RORC	(4V) Hamble Yacht Services
(3B) NGR	(31) South Bramble	(4W) Goodall Roofing
(3C) craftinsure.com	(33) Prince Consort	(4X) Colette
(3D) Salt Mead	(34) Cowes Corinthian	(4Y) North Ryde Middle
(3E) YachtDataBank	(39) Snowden	(4Z) South Ryde Middle
(3F) Elephant Boatyard	(4C) Club2Class.com	(40) Fastnet Insurance
(3G) Sevenstar Yacht Transport	(4E) Mike Till	(41) East Bramble
(3H) East Lepe	(4F) Deloitte Sailing Club	(42) Peel Bank
(3K) Lepe Spit	(4H) East Knoll	(43) Wightlink
(3L) Gurnard Ledge	(4J) hamblewinterseries.com	(44) Royal Yacht Squadron
(3N) Quinnell	(4K) Royal London YC	(45) S E Ryde Middle
(3P) Cowes Yacht Haven	(4L) William	(46) N E Ryde Middle
(3Q) Care Learning Centre	(4M) Hillhead	(47) Maraval
(3S) Royal Thames	(4N) QXI International	(5A) Regatta Lets
(3T) CHS	(4P) West Ryde Middle	(5B) Mother Bank
(3U) Gurnard	(4Q) John Fisher	(5C) Browndown
(3W) Williams Shipping	(4R) Darling Buoy	(5D) Kemps Quay
(3X) Party	(4S) Royal Southern	82 No 2 Cowes Harbour Buoy #
(3Y) West Knoll	4T Norris #	(91) RYS ODM Finishing Mark
(3Z) Trinity House Buoy	(4U) Fever-Tree	

May only be used as passing marks.
Not for rounding